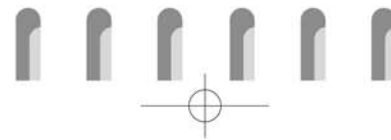


Dualit[®]

GUARANTEE AND
INSTRUCTIONS FOR
THE DUALIT HAND MIXER



SAFETY INFORMATION

Thank you for purchasing your Dualit hand mixer. Please read this instruction manual thoroughly and carefully before you start operating the unit to ensure safe and reliable performance. Please keep these instructions safe and save them for future reference.

IMPORTANT SAFEGUARDS READ ALL INSTRUCTIONS CAREFULLY BEFORE USING THE HAND MIXER.

Before plugging in, check that the voltage on the rating label is the same as the mains supply

- To protect against risk of electrical shock do not put the mixer in water or any other liquid. Only ever insert beaters in liquid.
- Close supervision is necessary when the mixer is used by or near children
- Unplug from outlet when not in use, before putting on or taking off parts and before cleaning
- Avoid contacting moving parts. Keep hands, hair

and clothing and other utensils away from beaters during operation to prevent injury and/or damage to the mixer

- Do not operate the mixer with a damaged cord or plug after the appliance malfunctions, or is dropped or damaged in any manner. Return appliances to the nearest authorised service centre for examination, repair, electrical or mechanical adjustment
- The use of attachments not recommended or sold by the manufacturer may cause fire, electric shock or injury
- Do not use outdoors
- Do not let the cord hang over the edge of the table or counter or touch hot surfaces, including ovens
- Remove beaters or dough hooks from mixer before washing
- Do not place mixer or bowls on or near a hot burner or in a heated oven
- Do not use the mixer for other than intended use

- Never use the plug without the fuse cover fitted. Ensure replacement fuse is the same current value as original. Replacement fuses are available from Dualit Ltd and should be ASTA approved to BS1362
- Connect the appliance to an earthed wall socket
- This is an attended appliance
- Servicing should be performed by an authorised service representative

SAVE THESE INSTRUCTIONS

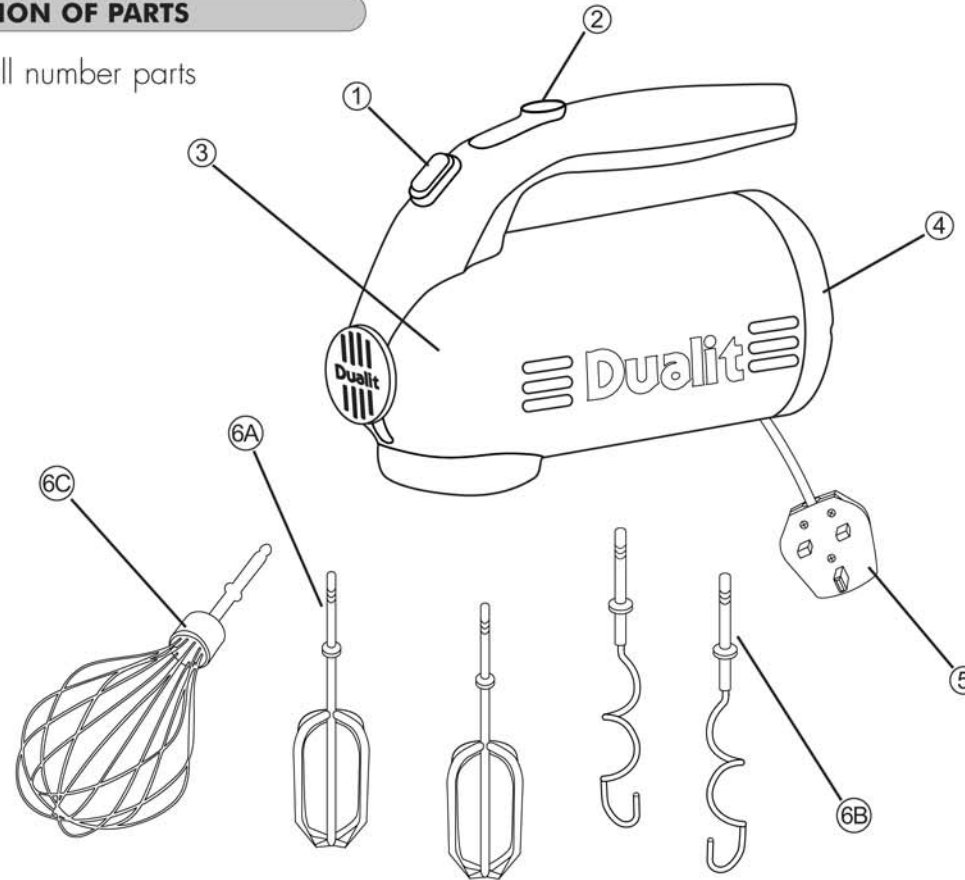
SPECIAL FEATURES

- 5 precision speeds allow you to choose the speed that best suits the foods you are preparing. The control settings are indicated by speeds 1-5
- The Beater Ejector Lever allows for easy release of the beaters. For safety, remove plug from power point before ejecting beaters
- Rubber grips on the end cap help to assist turning the power cord into the body for storage

IDENTIFICATION OF PARTS

Line drawing showing all number parts

- ① Eject Button
- ② Speed Knob
- ③ Main Body
- ④ End Cap
- ⑤ Power Cord
- ⑥A Beaters
- ⑥B Dough Hooks
- ⑥C Balloon Whisk



USING THE APPLIANCE

- Before handling the beaters, dough hooks or balloon whisk, check to ensure the mixer is unplugged from the electrical outlet and the speed control switch is set to the OFF position
- To unwind the power cord, pull the cord out gently by holding the plug. Do not pull further out than the red indicator
- Ensure you insert the correct dough hook into the correct hole on the underside of the mixer by matching the dough hook with a round collar on the stem into the round shaped hole on the right and the dough hook with a hexagonal collar on the stem into the hexagonal shaped hole on the left.
- Insert the beaters one at a time with a slight twisting action until they snap into place
- Plug the cord into a standard electrical outlet
- Place ingredients into a bowl
- Select the speed setting that matches your mixing task 1-5 (see mixing guide)
- After you have finished mixing, turn the speed control to OFF and unplug the electric cord
- Raise the mixer head and press down on the beater ejector button to eject the beaters
- Scrape excess ingredients off the beaters using a rubber or plastic spatula. Do not strike beaters on the rim of the bowl to remove any excess

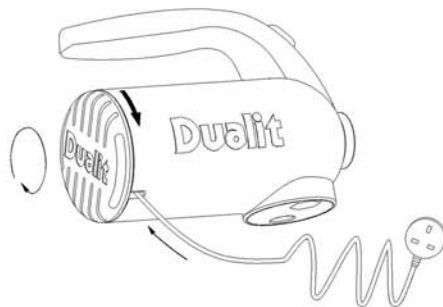
The plug can be stored in the underside of the mixer by winding the cord into the body leaving enough cord out to reach the head. Place the plug into the clearly defined holes for tidy storage

For your safety a unique safety lock will only allow the Beater Eject button to be depressed and the Beaters removed if the Speed Knob is in the OFF position.

If the Speed Knob is not in the OFF position the Beaters cannot be removed.

RETRACTABLE POWER CORD

- After each use, wind the power cord into the body of the mixer by turning the end panel clockwise for easy and tidy storage. Follow the arrow to (clockwise) show correct direction it should be turned
- Unplug electric cord from electrical outlet before cleaning
- To prevent cord damage always pull power cord out gently. If the cord jams, try to rotate end cap counter clockwise for half turn and then pull out the cord
- "Do not pull out the cable past the red indicator on the cord"



Just printer error. please forget these open quotation mark and close quotation mark. This sentence would not show this quotation marks in mass production.

MIXING GUIDE

Refer to the following mixing guide for your speed selections. As you add ingredients, the consistency of the mixture can change.

Speed	Function	Use
1	Blend	To combine liquids or cream
2	Stir	To prepare sauces, gravy, puddings and muffins
3	Mix	To prepare batters and mixes
4	Beat	To cream butter and sugar, make biscuit mix, cake mixes and icings
5	Whip	To whip light and fluffy mixtures, cream, beat eggs and mash potatoes
	Knead	Mix Dough

CARE AND CLEANING

- Wipe the mixer body clean with a dry cloth
- Wash the beaters, dough hooks and balloon whisk in hot, soapy water after each use
Rinse thoroughly and dry
- Beaters, dough hooks and balloon whisk are all dishwasher safe
- Detach the beaters from the mixer and store them carefully
- In order to store the power cord in the main body, rotate end cap clockwise, as per direction shown by arrow

GUARANTEE

If your mixer goes wrong within one year from the date of purchase, we will, at our discretion repair or replace it free of charge provided;

- You have not misused, neglected or damaged it
- It has not been modified
- It has been used for the purpose for which it is intended

This guarantee does not affect your statutory rights. Dualit Ltd does not assume any responsibility for incidental or consequential rights.

Dualit UK Customer Care Line :
+44 (0) 1293 652500

In USA call : 973 623 9370



Dualit[®]

Dualit Ltd, County Oak Way, Crawley, West Sussex, RH11 7ST.
Telephone: +44 (0) 1293 652 500. Facsimile: +44 (0) 1293 652 555. www.dualit.com

